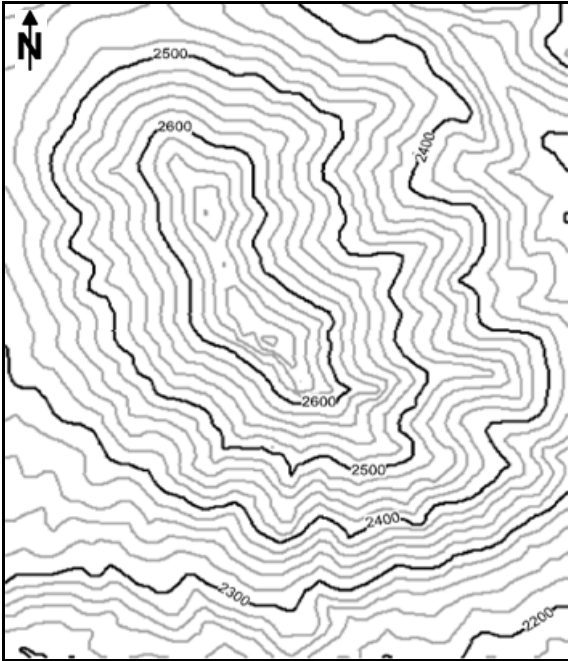


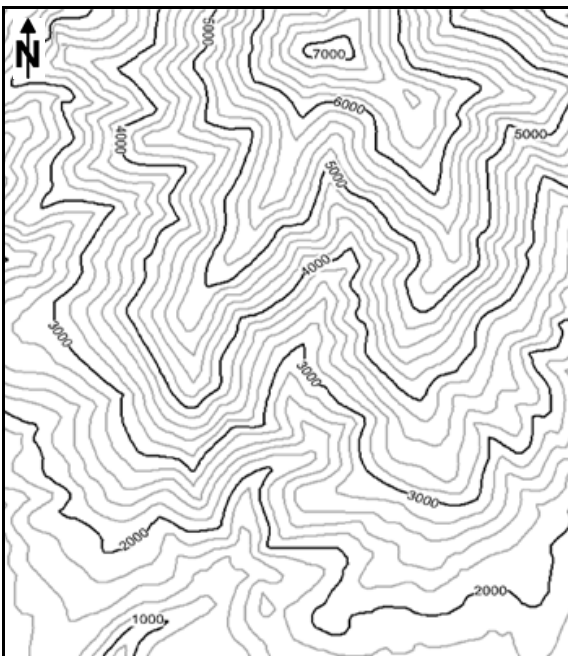
MODULE 1 Worksheet 1A. Work through the Visualizing Topography module on the computer. Put your observations and answers in the appropriate spaces below.

By now, you have a picture in your mind of what this landscape looks like. In the space provided below, write a description of this landscape so that someone who had not seen it before could imagine it in his or her mind.



Landscape description:

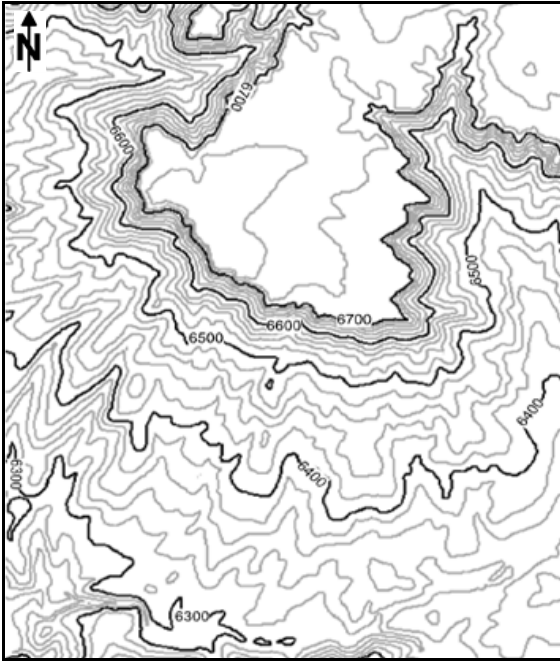
By now, you have a picture in your mind of what this landscape looks like. In the space provided below, write a description of this landscape so that someone who had not seen it before could imagine it in his or her mind.



Landscape description:

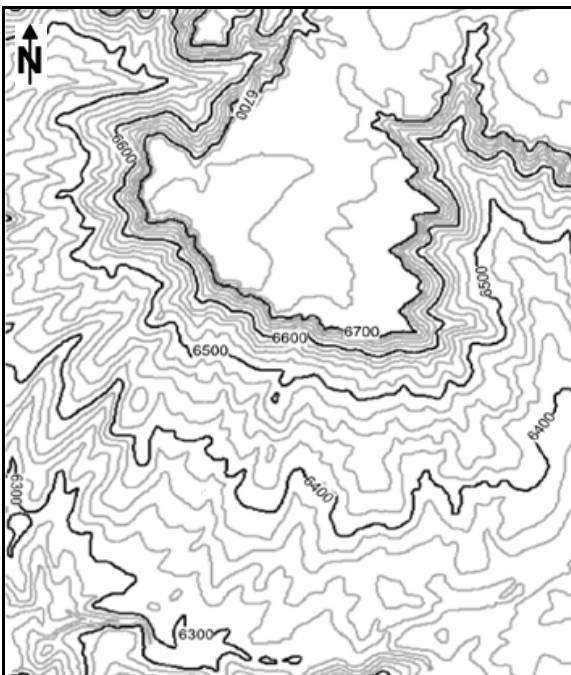
Name _____

Worksheet 1A (cont.) By now you have a picture in your mind of what this landscape looks like. In the space provided below, write a description of this landscape so that someone who had not seen it before could imagine it in his or her mind. For this map, you will not be provided with an example of how you might describe this landscape.



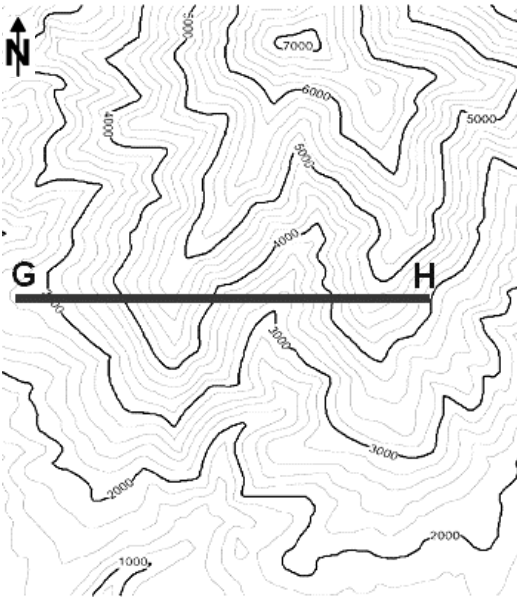
Landscape description:

By now you have a picture in your mind of how this landscape floods. In the space provided below, write a description of which part of this landscape floods first and which part of the landscape would flood last.



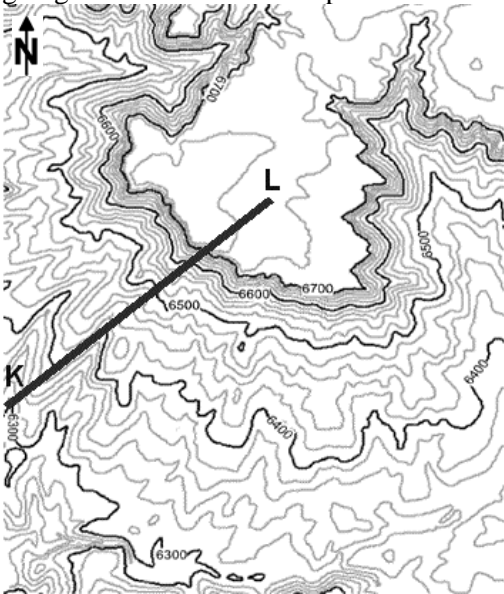
Landscape flooding description:

Try to envision walking from G to H, especially when you are going up hill and when you are going downhill. Sketch the profile from G to H in the space provided to the right of the map.



Profile from G to H:

Try to envision walking from K to L, especially when you are going up hill and when you are going downhill. Sketch the profile from K to L in the space provided to the right of the map.



Profile from K to L: